

## Expand Energy-saving Equipment and Improve Energy Efficiency

### Case Study : Introducing State-of-the-art Labor-saving and Energy-saving Equipment

The Maruha Nichiro Corporation Shin-Ishinomaki Plant, which relocated due to damage sustained during the Great East Japan Earthquake of March 2011, has introduced state-of-the-art equipment such as automated guided vehicles that can carry raw materials and other materials to a predetermined position, in addition to various labor-saving devices for use in production. In addition, all the lighting in the plant has been changed to LEDs, and the superheated steam fryers and freezers have been upgraded to the latest energy efficient models. Furthermore, the plant has also adopted an “energy visualization system” that makes it possible to manage all of these energy usage conditions at once.



Shin-Ishinomaki plant



Automated guided vehicle



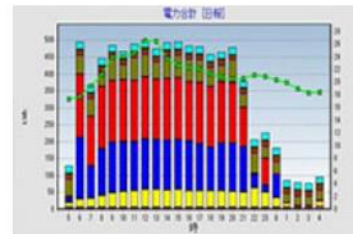
LED lighting



Superheated steam fryers



Energy-efficient freezers



Energy visualization system screen